

# Christmas Medley

Lorenzo Pusceddu

Oboe

**Allegro moderato (brillante)** ♩ = 108-112

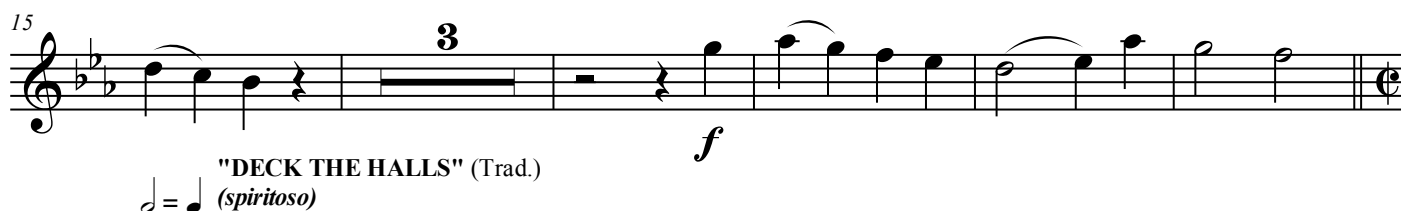
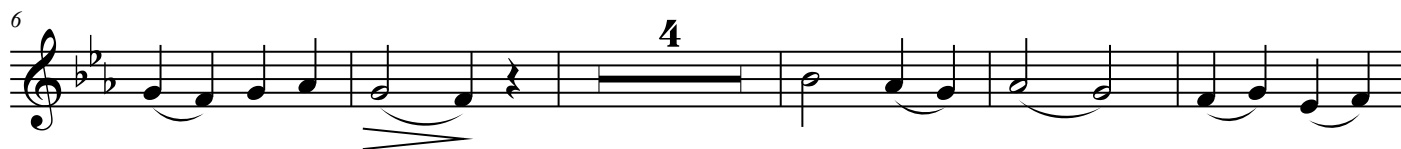
"ALLELUJA" (G.F. Haendel)

(brillante)

"ADESTE FIDELES" (Trad.)

(espressivo)

tutti



"DECK THE HALLS" (Trad.)

♩ = ♩ (spiritoso)



"STILLE NACHT" (F. Gruber)

a tempo (espressivo)



63 *rall.* **a tempo** *rall.*

**3**

*All<sup>o</sup>mf* (spiritoso) (♩ = 128-132)

**f**

"GOOD KING WENCESLAS" (Trad.)

72 **2** **2**

*mf*

80 *rall.* **a tempo**

**2**

*f*

♩ = ♩ (sciolto)

"GLORIA IN EXCELSIS DEO" (Trad.)

87 *mf*

93 *p* *mp* **2<sup>nd</sup> time only**

98 **1.** **2.**

(nobilmente)

"TOCHTER ZION" (G.F. Haendel)

104 **3** *mf*

112 **6** *f*

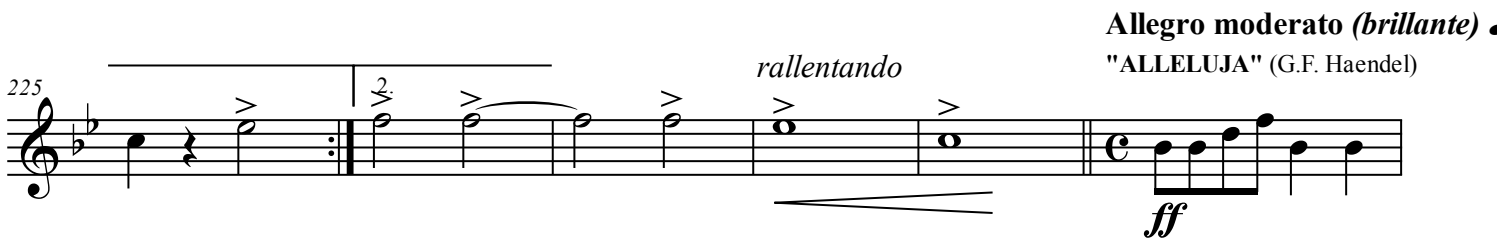
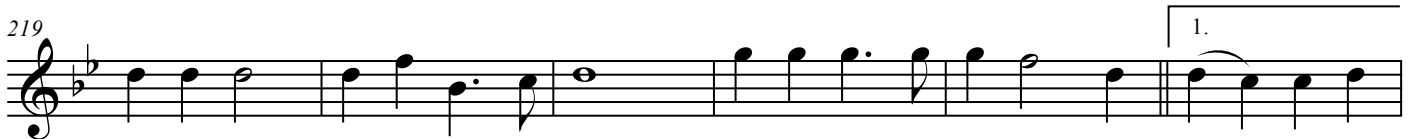
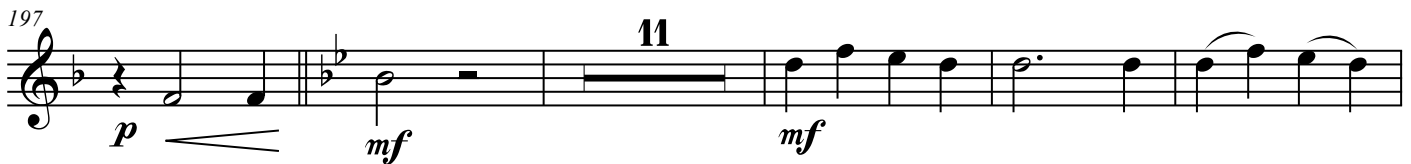
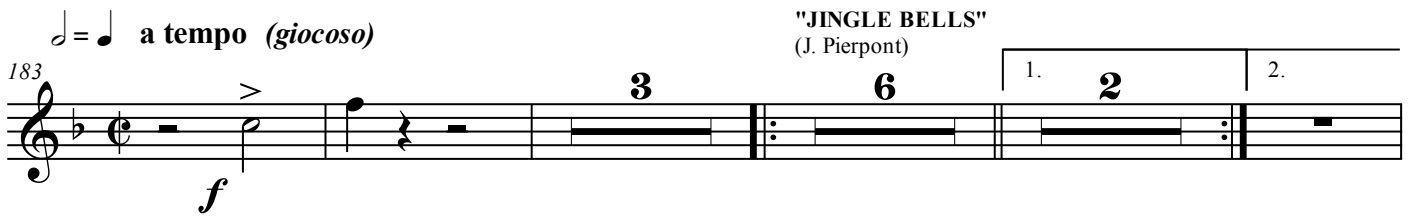
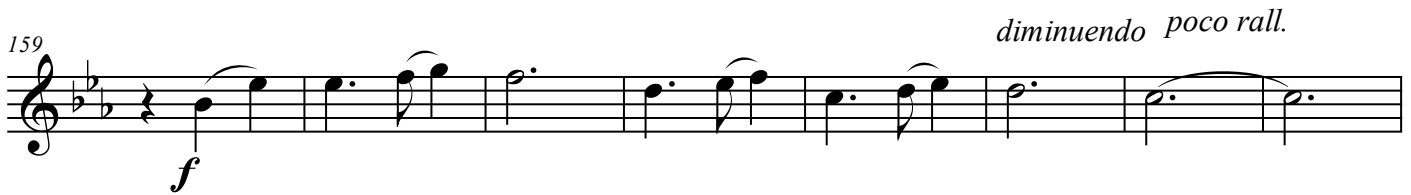
123 *rall.* **Più mosso** (♩ = 136-140) **7**

# Christmas Medley

3

*(espressivo)*

"GREENSLEEVES" (Trad.)



# Christmas Medley

4

*allargando*

